

## Single & Multiple

Cemeteries range from the very small to enormous commercial and historical. Max is best suited for cemeteries from 8,000 to 100,000 where tracking of information and on going care of the cemetery is required.

Max is designed to record owners and interred with a variety of reports and screens best suited for tracking an active, growing cemetery.

### Owners

Individuals that purchase grave sites and make additional requests of your staff for the care and maintenance of each site.



### Interred

Full or cremated remains of deceased recorded with all prior information



### Screens & Reports

Reports separated by the areas of your cemetery or all together. Screens provide easy entry and tracking.



## CSR Consultants LLC

P.O. Box 8  
Cosmos, MN 56228  
Phone: 320-877-7408  
Fax: 320-877-7054  
E-mail: [inforequest@cemeterydatabase.com](mailto:inforequest@cemeterydatabase.com)

**CSR  
CONSULTANTS  
LLC**

**C e m e t e r y  
M a n a g e m e n t  
M a x**

**Large Cemeteries  
over 8,000 interred**

# Features

A single database file that is designed to repair itself, maintain a small footprint for easy backup and retrieval and include all data collecting needs of an active growing cemetery. Built-in safeguards prevent data corruption, automated removal systems to resolve leaving conflicting data and storage systems to eliminate duplication of data entry. User definable data areas for automated insertion of repetitive data.

A single user system that can be accessed stand alone or in a networked environment. No monthly user fees and no annual maintenance contract required. Additional licenses at a fraction the cost of additional programs.

Works with XP, Vista and Windows 7.

Comes with its own database engine, no need to learn anything other than when and where to enter data. Automates most common tasks with cemetery data.

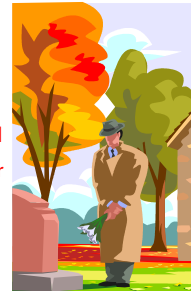
Program can be customized to your cemetery at a reasonable cost. Program can be setup for you with GSS (Grave Site Setup) or modified and setup with GSL (Grave Site Layout).



**Cemetery Management Max in Single and Multiple Cemetery Releases.**

## Owners

Enter an Owner with first and last name and their known address. When an invoice is opened all of this information is displayed in a standard printing format. Record grave site purchases singularly or in groups from 2 to 10 sites at a time. Sites can reflect perpetual or continual care options. Enter deed information and open a tri-fold deed with all information entered on graves purchased by an owner. Record product purchases, assign requests for grave site repair and include trust accounts.



**Crypts, Mausoleums & Columbarium's Included**

## Interred

The heart of a cemetery program is recording interred with all known information at the time of their death. Interred are all deceased; interments are full casket and inurnments are cremations. Reports are separated to display the different types of burials, where the burial is and in what form the burial is placed. Data entered includes full military, prior address, genealogy, cause of death, organizations belonged to, sex, clergy, funeral home, prior data entry methods and many more standard data entry areas.

## Screens

Depending on how much information is provided for setting up a program, or how much information a user enters, screens will display information in different colors, formats and by 22 predefined search areas. Click on a search request and you are taken to all information entered concerning that criteria. For

individuals looking for information on an interment you can print out a complete report on the deceased and provide a map towards finding the interred in your cemetery.

Contact CSR by first filling out a "Request for Information" at [www.cemeterydatabase.com](http://www.cemeterydatabase.com)

The next step is to decide whether to have your maps digitized. If you have spreadsheet data CSR can import your data for one low set fee. Do you want CSR to set the program up ready for you to enter your data?

**CONTACT US TODAY**

**CSR Consultants LLC**

P.O. Box 8

Cosmos, MN 56228

Phone: 320-877-7408

Fax: 320-877-7054

E-mail: [inforequest@cemeterydatabase.com](mailto:inforequest@cemeterydatabase.com)